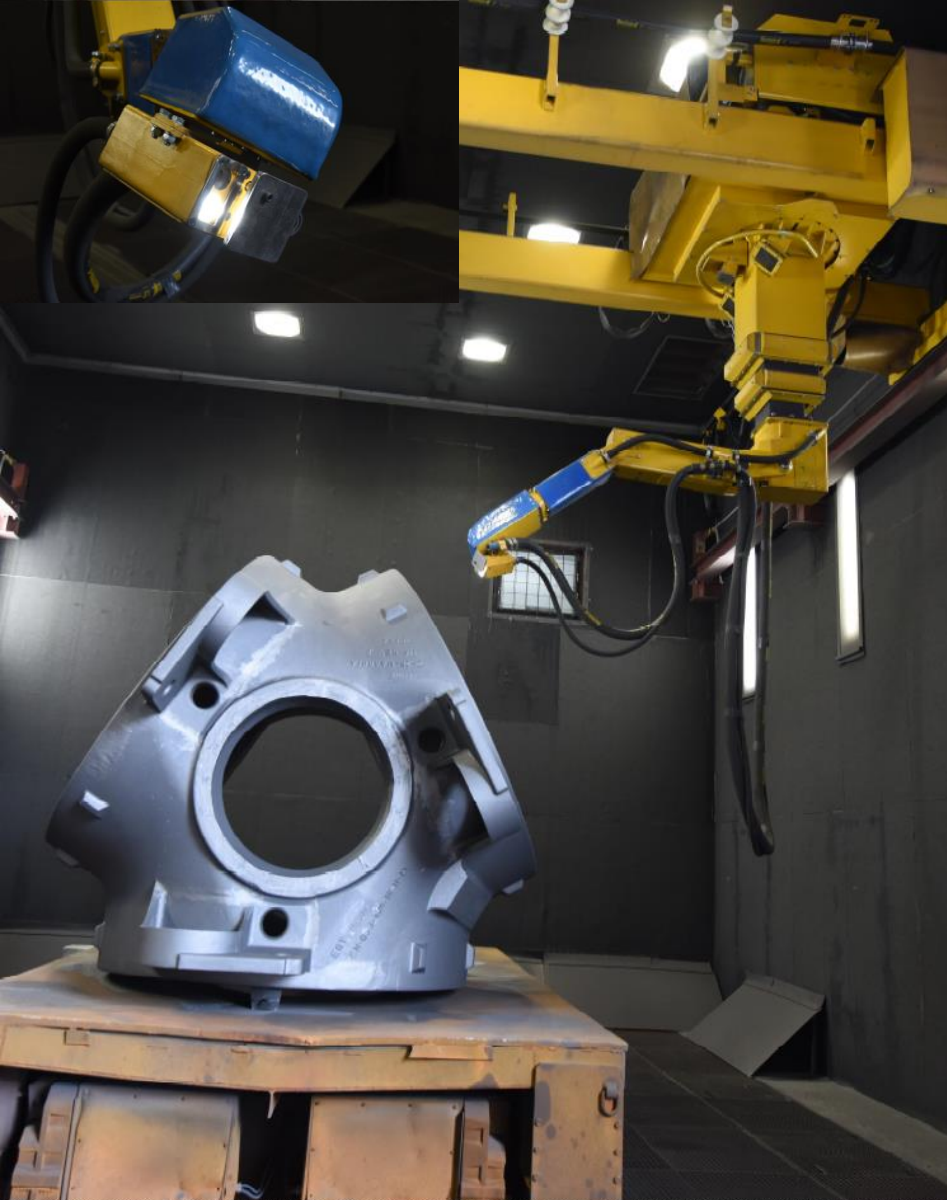


# Blastman Wind Power References





## EISENGIESSEREI, GERMANY

- **Customer:**  
Eisengiesserei Torgelow GmbH  
Torgelow
- **Delivery in 2015:**  
Blastman B20S robot, Vision system
- **Number of nozzles:**  
1 pcs 19mm Blastman nozzles
- **Work pieces:**  
Wind Power Castings





## CS WIND, CANADA

- **Customer:**  
CS Wind Canada, Windsor
- **1<sup>st</sup> delivery in 2011:**  
2 pcs Blastman B12 robots
- **2<sup>nd</sup> delivery in 2013:**  
1 pcs Blastman B12 robot
- **Number of nozzles:**  
2 pcs 19mm Blastman nozzles per robot
- **Work pieces:**  
Wind Power towers
- **Other**  
Automatic programming by entering tower parameters.





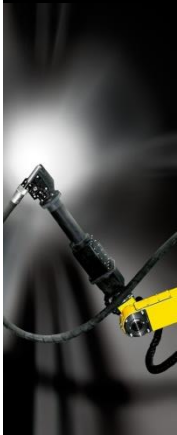
## SMULDERS , BELGIUM

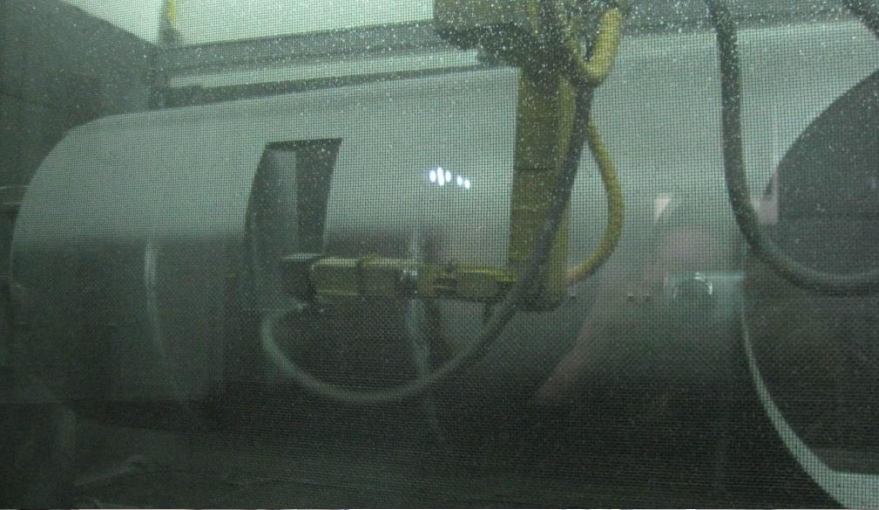


YouTube Video

**Blastman**  
Robotics Ltd.

- **Customer:**  
Smulders Projects Belgium N.V.,  
Hoboken
- **Delivery in 2009:**  
1 pcs Blastman B12 robot with long  
arm and Blastman blast vessel
- **Number of nozzles:**  
1 pcs 19mm Blastman nozzle
- **Work pieces:**  
Wind Power towers
- **Other**  
Automatic programming by entering  
tower parameters.

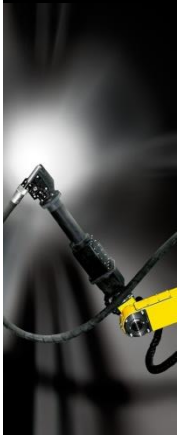


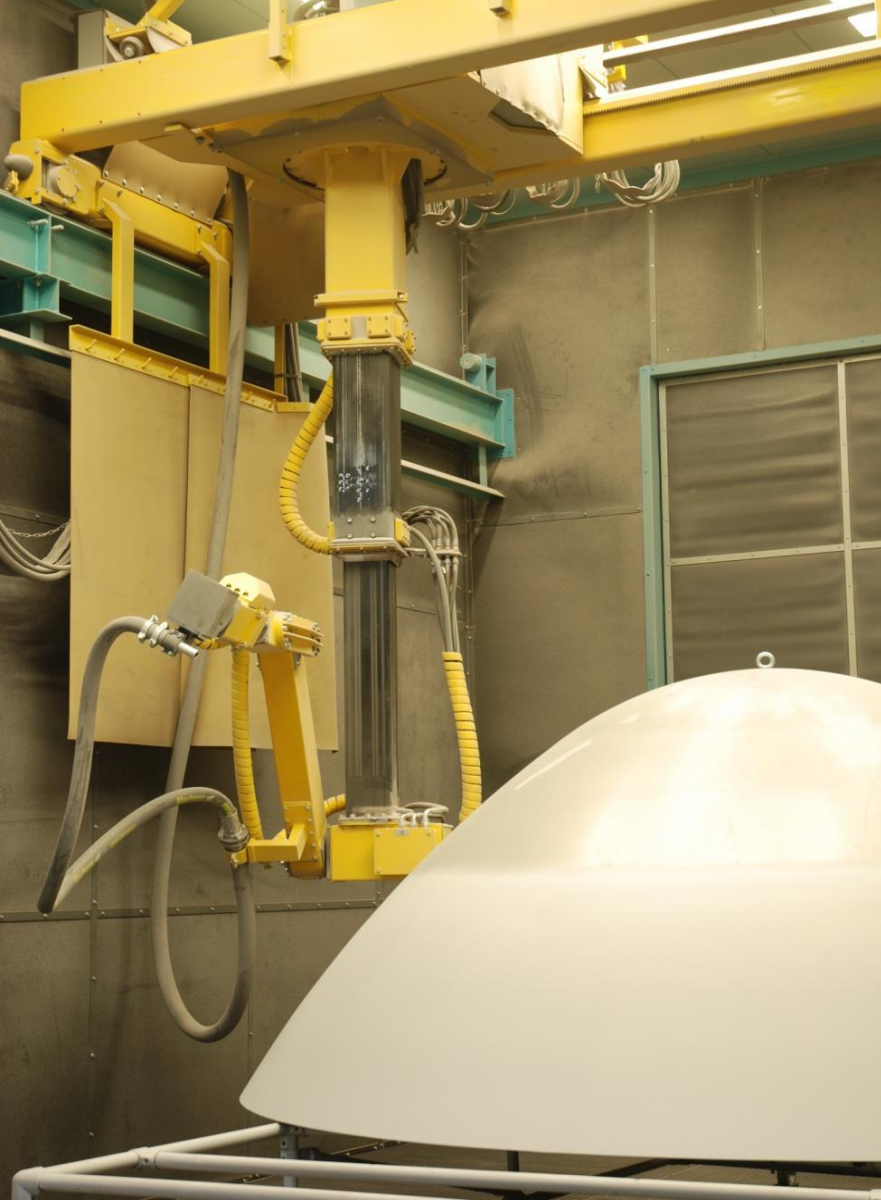


## MARTIFER ENERGIA S.A., PORTUGAL

- **Customer:**  
Martifer Energia, S.A., Oliveira de Frades
- **Delivery in 2009:**  
1 pcs Blastman B20 robot and Blastman blast vessel
- **Number of nozzles:**  
1 pcs 19mm Blastman nozzle
- **Work pieces:**  
Large wind turbine parts made of steel

Both pictures from Martifer Energia, Portugal

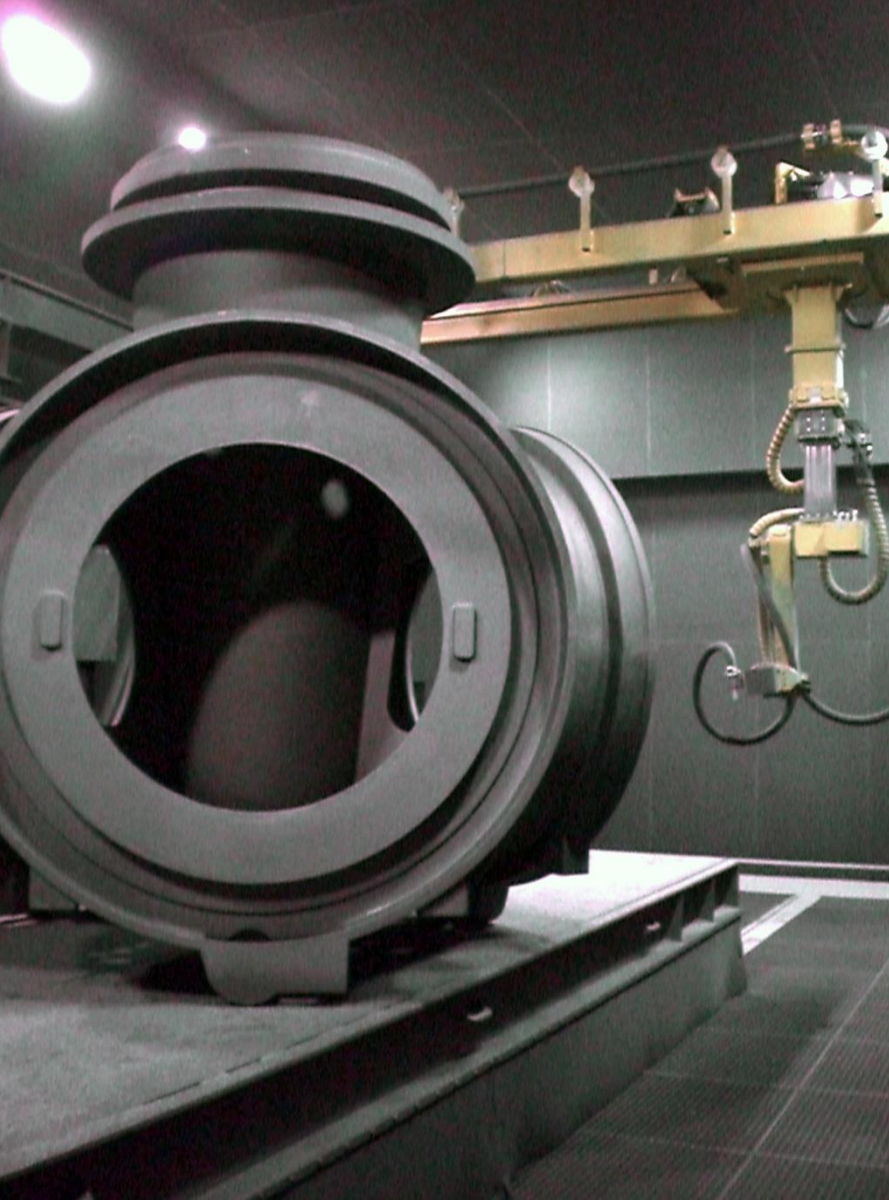




## ENERCON, GERMANY

- **Customer:**  
Enercon Magdeburg & Enercon Aurich
- **Deliveries in 2008:**  
Metalldesign Magdeburg GmbH:  
1 pcs Blastman B20 robot and Blastman blast vessel  
Metalltechnologie Aurich GmbH:  
1 pcs Blastman B20 robot and Blastman blast vessel
- **Number of nozzles:**  
1 pcs 16mm Blastman nozzle
- **Abrasive material:**  
Garnet
- **Work pieces:**  
Aluminum wind power parts





## FRIEDRICH WILHEMS-HÜTTE, GERMANY

- **Customer:**  
Friedrich Wilhelms-Hütte, Mülheim  
an der Ruhr
- **Delivery in 2008:**  
Blastman B20 robot
- **Number of nozzles:**  
1 pcs 19mm Blastman nozzle
- **Work pieces:**  
Large wind power castings and diesel  
engine blocks





## EWP WINDTOWER PRODUCTION AB, SWEDEN

- **Customer:**  
EWP Wind tower Production AB,  
Malmö
- **Delivery in 2007:**  
2 pcs Blastman B12 robots and  
Blastman blast vessels (1 for each  
robot)
- **Number of nozzles:**  
1 pcs 16mm Blastman nozzles for  
each robot
- **Work pieces:**  
Wind Power towers
- **Other**  
Automatic programming by entering  
tower parameters.







## ALSTOM POWER, POLAND

- **Customer:**  
ALSTOM Power Sp. z o. o. Elblag
- **1<sup>st</sup> delivery in 1998:**  
Blastman B20C robot, blast chamber and Blastman blast vessel
- **2<sup>nd</sup> delivery in 2008:**  
Blastman B20C robot and Blastman blast vessel
- **Work pieces:**  
Cast turbine parts, wind power

Picture from 1<sup>st</sup> delivery in 1998 for  
Alstom Power, Elblag, Poland





## VESTAS CASTINGS, SWEDEN

- **Customer:**  
Vestas Castings, Guldmedshyttan
- **Delivery in 2005:**  
Blastman B20C robot, blast chamber and blast vessel
- **Number of nozzles:**  
1 pcs 19mm Blastman nozzle
- **Work pieces:**  
Cast wind turbine parts



**More references and  
videos can be found:**

**[www.blastman.com](http://www.blastman.com)**

**BLASTMAN ROBOTICS LTD**

**Kaarnatie 40, FI-90530**

**OULU, FINLAND**

**Tel. +358 20 7418140**

**Fax +358 20 7418141**

**[sales@blastman.com](mailto:sales@blastman.com)**

